

**EXECUTIVE COMMITTEE  
ACTION ITEMS**

**(ATTACHMENTS 5A-5E)**

**Recommend Approval of Wilkes-Barre Center Renovation**

Recommend the Luzerne County Community College Board of Trustees approve the award of the Wilkes-Barre Center expansion renovation bid to the lowest responsible bidder: D&M Construction Unlimited, Inc. in the amount of \$419,400. In addition, a 5% project contingency (\$20,970) and hemmler + camayd architects will be compensated in line with our agreement for miscellaneous services in the amount of \$32,983.71 for a total project cost of \$473,353.71.

**Rationale:**

Identified needs for more classes to be held at the Wilkes-Barre Center have led to the College acquiring additional space on the street level of the building in which the lower level is currently utilized for classes and student services. Extending the lease, which was approved at the June 22, 2021, Board of Trustees meeting, and expanding into the new space will require minor renovations for the relocation of two (2) computer labs, the addition of one (1) classroom, a writing lab and testing space as well as renovated office space.

Renovation that is a bit more extensive will be necessary to add a planned science lab in the new space. This lab and classroom will support students, many of whom are enrolled in Health Sciences programs. The lower level will reallocate the vacated space to allow for two (2) additional classrooms and the ALTA staff to be centralized in a more prominent area.

This project will be funded by available capital funds allocated for projects. The 5% contingency is not a definite expenditure; however, available if necessary. If it is not utilized as part of the project, the funds will be returned to the available funds for other projects.

Related to this bid award is the concurrent Science Lab Furniture bid award to Kewaunee Scientific Corporation. Following the College's Purchasing Policy and Procedure, recent quotes for science equipment and bid awards will be used to outfit the new space including Bid 499 – Microscopes and Bid 498 – Furniture Replacement.

TO: Thomas P. Leary, President

FROM: Cheryl L. Baur, Vice President of Finance

DATE: July 19, 2021

RE: Wilkes-Barre Center expansion renovation

Our architectural and engineering consultant firm, hemmler + camayd architects, prepared bid documents that were advertised on Wednesday, June 23, 2021. Bids were opened on Monday, July 19, 2021.

There is one (1) contract associated with this bid. Five (5) general contractors and four (4) subcontractors attended the mandatory pre-bid meeting on Wednesday, June 30, 2021. Three (3) bidders submitted on July 19, 2021, which resulted in the following:

Bidder	Base Bid
D&M Construction Unlimited	\$419,400
Champion Builders, Inc.	\$474,400
Apollo Group, Inc.	\$489,500

Hemmler + camayd architects has reviewed the bid packages and found the required information to be in order. We recommend awarding the bid to the lowest responsible bidder: D&M Construction Unlimited, Inc. in the amount of \$419,400. In addition, a 5% project contingency (\$20,970) and hemmler + camayd architects will be compensated in line with our agreement for miscellaneous services in the amount of \$32,983.71 for a total project cost of \$473,353.71.

Identified needs for more classes to be held at the Wilkes-Barre Center have led to the College acquiring additional space on the street level of the building in which the lower level is currently utilized for classes and student services. Extending the lease, which was approved at the June 22, 2021, Board of Trustees meeting, and expanding into the new space will require minor renovations for the relocation of two (2) computer labs, the addition of one (1) classroom, a writing lab and testing space as well as renovated office space.

Renovation that is a bit more extensive will be necessary to add a planned science lab in the new space. This lab and classroom will support students, many of whom are enrolled in Health Sciences programs. The lower level will reallocate the vacated space to allow for two (2) additional classrooms and the ALTA staff to be centralized in a more prominent area.

This project will be funded by available capital funds allocated for projects. The 5% contingency is not a definite expenditure; however, available if necessary. If it is not utilized as part of the project, the funds will be returned to the available funds for other projects.

Related to this bid award is the concurrent Science Lab Furniture bid award to Kewaunee Scientific Corporation. Following the College's Purchasing Policy and Procedure, recent quotes for science equipment and bid awards will be used to outfit the new space including Bid 499 – Microscopes and Bid 498 – Furniture Replacement.

July 19, 2021

To: Natalie Staron, Operations Analystist  
Luzerne County Community College  
Nanticoke PA

Re: Renovations to the Wilkes-Barre Center

Natalie,

I am writing to you regarding the above referenced project. We have reviewed all of the bids submitted for the General Trades contracts received on July 19, 2021 for the Renovations at the Wilkes-Barre Center. I have spoken to the apparent low bidder in a de-scope phone call and discussed critical items such as schedule and logistics. The only concern is related to COVID 19 and HVAC equipment fabrication and delivery schedule but this issue would affect all of the other bidders as well.

Based on the information we have and the bid de-scope, I recommend that Luzerne County Community College move forward with the low bid submitted by:

D&M Construction Unlimited Inc.  
107 N Turnpike Road  
P.O. Box 132  
Dalton PA 18414

Please feel free to call me with any questions and thank you for your attention to this matter.

Respectfully Submitted,



Brian D. Doran AIA LEED AP  
Partner

cc: Natalie Staron, LCCC  
file

**Recommend approval of Science Lab Furniture for Wilkes-Barre Center**

Recommend the Luzerne County Community College Board of Trustees approve the award of the Science Lab furniture to the preferred, standard science lab furniture vendor, Kewaunee Scientific Corporation in the following amount for the Wilkes-Barre Center Science Lab - \$65,203.

**Rationale:**

Funding for these purchases is available with allocated pandemic relief funds. Ordering of the science lab furniture is occurring in tandem with the award of the renovation contract for this center and the science lab will be the last phase of the renovation.

The Wilkes-Barre Center Expansion Renovation Project is concurrently being submitted for a poll vote of the Board of Trustees. Renovation costs will be paid from allocated capital funds for prioritized projects.

As allowable within our Purchasing Policy, and to preserve the standard quality, the Science Department at Luzerne County Community College selected the preferred, standard science lab furniture vendor as Kewaunee Scientific Corporation. This decision was based on Kewaunee's patented, quality, durable, and reasonably priced furniture to standardize the labs so that a lab on any campus would provide a similar experience in content as well as available materials, equipment, and furnishings.

**Recommend Approval of Shamokin Center Flooring**

Recommend the Luzerne County Community College Board of Trustees approve the award of the Shamokin Center Flooring replacement bid to the lowest responsible bidder: Bognet, Inc. in the amount of \$88,777.06. In addition, a 5% contingency (\$4,438.85) is requested to be included for a total project cost of \$93,215.91.

**Rationale:**

In order to maintain a quality learning environment, much of the existing carpet flooring in this center will be replaced due to being worn from many years of use. It has not been replaced since the College first opened this center in 1999.

This project will be funded by available capital funds allocated for projects. The 5% contingency is not a definite expenditure; however, available if necessary. If it is not utilized as part of the project, the funds will be returned to the available funds for other projects.

The Shamokin Center offers courses and student services to the surrounding area. There are dedicated science, nursing, and computer labs as well as general classroom and student gathering areas used for studying and student government association (SGA) activities. The College utilizes space on the second and fourth floors.

TO: Thomas P. Leary, President

FROM: Cheryl L. Baur, Vice President of Finance

DATE: July 19, 2021

RE: Re-Bid of Shamokin Center Flooring

.....  
The Operations Division of the College prepared bid documents that were advertised on Monday, May 17, 2021, and opened on Thursday, June 10, 2021. All bids were rejected on Monday, June 14, 2021, when the low bidder pulled their bid due to a calculation error by a subcontractor.

The project was re-bid and advertised on Wednesday, June 23, 2021. Bids were opened on Monday, July 19, 2021.

There is one (1) contract associated with this bid. Three (3) bidders reviewed the space at the Shamokin Center between bid advertisement and opening. One (1) bidder submitted on July 19, 2021, which resulted in the following:

Bidder	Base Bid
Bognet, Inc.	\$88,777.06

This bid is in line with the pricing submitted in June. There were two (2) bids received in June - \$98,166 and the bid removed due to a calculation error by a subcontractor in the amount of \$59,919.

We have reviewed the bids and recommend awarding the bid to the lowest responsible bidder: Bognet, Inc. in the amount of \$88,777.06. In addition, a 5% contingency (\$4,438.85) is requested to be included for a total project cost of \$93,215.91.

POLL VOTE REQUESTED

**Recommend approval of Greater Susquehanna Science Lab Renovation Change Order**

Recommend the Luzerne County Community College Board of Trustees approve the change order to Bognet, Inc. in the amount of \$6,205.22 for permit fees associated with the project.

**Rationale:**

Permit fees, which are traditionally a requirement of the contractors, were not clearly stated in the bid documents prepared by the architects as being the responsibility of the contractor. The permit fees are the responsibility of the contractor and therefore a change order is necessary.

**The previously approved project contingency is \$9,088.90, which will cover the costs associated with this change order. Per College policy for change orders, Board of Trustees approval is required to move forward appropriately.**



**Recommend ratification of Greater Susquehanna Science Lab Renovation Change Order**

Recommend the Luzerne County Community College Board of Trustees ratify the change order to Bognet, Inc. in the amount of \$5,263.24 for the change in lighting cost associated with the project.

**Rationale:**

The lighting fixtures originally specified for the project were manufactured by Pinnacle. LCCC received notification from the contractor late last week that the expected ship date, from Colorado, would be September 3, 2021. The late ship date plus the fact that the ceiling contractor cannot install the ceiling in the science lab or the classroom until the lighting fixtures are installed would not allow us to guarantee to be in the rooms by Monday, September 13, 2021. This date is a critical date provided by our Science department for students to be in the lab.

A new manufacturer option was identified by the architect and the electrical contractor yesterday, Monday, August 16, 2021. In order for Coronet to guarantee shipment, from New Jersey, on August 25, 2021, the order must be placed by end of business on Tuesday, August 17, 2021. This will allow the lighting fixtures to arrive, be installed, and then the ceilings to be installed prior to the September 13, 2021 date.

The pricing was received at 11:38 AM on August 17, 2021. President Leary reviewed and provided his emergency approval based on the circumstances an hour later. The contractor has been notified to order the light fixtures to move the project forward.

**The previously approved project contingency is \$9,088.90, which will cover a portion (\$2,883.68) of the costs associated with this change order. The remaining balance of \$2,379.56 will be paid from previously allocated capital funds. Per College policy, Board of Trustees Executive Committee ratification of the emergency approval is required.**

# Bognet, Inc.

General and Mechanical Contractor

1298 North Church St., Hazle Township, PA 18202 ~ 570.454.2584 ~ FAX 570.454.7631

August 17, 2021

hemmler + camayd architects  
409 Lackawanna Avenue  
Suite 400  
Scranton PA 18503  
Attn: Brian Doran

Re: LCCC Science Lab  
Greater Susquehanna Center  
Watsonstown PA

Gentlemen,

Please see the copy of a Change Order request submitted to Bognet from our Electrical Subcontractor.

The cost for changing the lighting fixture is as follows:

• Cost from Hayden Power Group		\$ 4,690.95
	10% OH	<u>469.09</u>
		\$ 5,160.04
	2% Bond	<u>103.20</u>
	Total	<u>\$ 5,263.24</u>

Your prompt approval is greatly appreciated.

Thank you for the opportunity.

Respectfully submitted.



James G. Bognet, P.E.  
President

Visit our website: "[www.BognetInc.com](http://www.BognetInc.com)"



Power is our life

James Bognet  
Bognet, Inc.  
P.O. Box 206  
Hazleton, PA 18201

August 17, 2021

Re: Revised Lighting Manufacturer

**Change Order Request**

**No. 003**

**Scope:**

To include all labor, equipment, material etc. required to complete the work as follows:

- Revise lighting manufacturer from Pinnacle to Coronet per discussions between architect and Diversified Lighting on 8/16/2021.
  - o Pinnacle ESD 9/3/2021
  - o Coronet ESD 8/25/21
    - While the fixtures may be equal the manufacturers are not equal. Pinnacle is a larger operation in Denver and Coronet is smaller factory in Jersey with different operating costs. Therefore, they can get an order tomorrow and ship out the following week. All factories that operate like this typically cost more.

**Scope Clarifications:**

- HPG INC. includes equipment for all items listed above.
- HPG INC. includes only the work itemized above in our overall change proposal total value.
- HPG INC. excludes bonding in cost.
- HPG INC. includes the scope listed above and only that scope, any other changes that may not have been covered will not be at Hayden's expense.
- HPG INC. excludes permits and inspections.
- HPG INC. excludes working off peak hours, all work shall be completed between 7 a.m. to 3:30 p.m.
- All scrap materials resulting from the Service shall at Hayden's sole option automatically become its property.

**If accepted the contract shall increase by.....\$4,690.95**

**Four Thousand Six Hundred Ninety Dollars and Ninety-Five Cents.**

Respectfully submitted,

Caleb Fera  
Project Manager  
Hayden Power Group

[www.haydenpower.com](http://www.haydenpower.com)

235 East Maple Street  
Hazleton, PA18201  
Ph: 570.455.6109

1016 East 7th Street  
Bloomsburg, PA 17815  
Ph: 570.787.9646





Change Order No. 003

1016 EAST 7TH STREET  
 BLOOMSBURG, PA 17815  
 OFFICE (570) 784-9646  
 FAX (570) 784-9020

Date: August 17, 2021

To: Bognet, Inc.

Attn: James Bognet

Project Name: LCCC - Lab Renovations - Watsontown  
 Reference: Revised Lighting Manufacturer

**DESCRIPTION OF CHANGE**

The approved lighting manufacturer, Pinnacle, has an ESD of 9/3/21. Per the direction of the Architect we have investigated and found that a similar fixture can be manufactured by Coronet with an ESD of 8/25/21, if this change order is approved and the fixtures are ordered by 8/17/21.

**CHANGE ORDER SUMMARY**

Contractor Name

HAYDEN POWER GROUP

	Contractor/Subcontractor Name	Total (from cost breakdown)	Markup on Sub (if applicable)	Total
1	HAYDEN POWER GROUP	\$4,485.00		\$4,485.00
2				\$0.00
3				\$0.00
4				\$0.00
5				\$0.00
Total (L/M/E/S)				\$4,485.00
	Business Privilege Tax	0.2%		\$8.97
	Safety	2.0%		\$89.70
	Small Tools/Consumables	1.5%		\$67.28
	Administration Fee			\$40.00
<b>TOTAL THIS CHANGE</b>				<b>\$4,690.95</b>

**Notes**



	\$0.00
<b>TOTAL EQUIPMENT</b>	<b>\$0.00</b>
<hr/>	
	\$0.00
<b>LME TOTAL</b>	<b>\$4,485.00</b>
<hr/>	

**COST BREAKDOWN (con't)**

Contractor Name **HAYDEN POWER GROUP**

**ADDITIONAL MATERIAL**

Item	UOM	Quantity	Unit Cost	Total Cost
				\$0.00
				\$0.00
				\$0.00
				\$0.00
				\$0.00
				\$0.00
				\$0.00
				\$0.00
				\$0.00
				\$0.00
				\$0.00
				\$0.00
				\$0.00
				\$0.00
				\$0.00
				\$0.00
				\$0.00
				\$0.00
				\$0.00
				\$0.00
				\$0.00
				\$0.00
				\$0.00
				\$0.00
				\$0.00
				\$0.00
				\$0.00
				\$0.00
<b>Sub-Total</b>				<b>\$0.00</b>



## Change Order - Quotation

**TO:**  
YAL GEORGE J HAYDEN INC  
Attn: Court Willoughby  
235 EAST MAPLE STREET  
HAZLETON, PA 18201-6000

**Project:** LCCC Watsontown Lab Reno  
**Date:** 08/17/21  
**PO #:** 014221  
**Change #:** 1  
**Freight in Exempt :** Yes

**Material Change:** **3,900.00**

Change Type	Quantity Description	Unit or Lot#	Unit Price	Ext Price	Change Amt
<b>CALL 24 HOURS PRIOR TO DELIVERY</b> <b>CALEB 570-710-3269</b>					

A-4'	0 EV6-A-CL835625-4-G1G-U-OL2-1-0-W	PINNACLE	0.000	0.00	-11,341.82
	<u>Prev Qty</u> <u>Change Qty</u> <u>New Qty</u> 4            -4            0				
	** Lot Price changed from 11,341.820 to 0.000 **				
	** Quantity changed from 4 to 0 **				
A-24'	0 EV6-A-CL835625-24-G1-U-OL2-1-0-W	PINNACLE			
	<u>Prev Qty</u> <u>Change Qty</u> <u>New Qty</u> 4            -4            0				
	** Quantity changed from 4 to 0 **				
B-12'	0 EV6-A-CL835HO-12-G1-U-OL2-1-0-W	PINNACLE			
	<u>Prev Qty</u> <u>Change Qty</u> <u>New Qty</u> 8            -8            0				
	** Quantity changed from 8 to 0 **				
A-4' ALT	4 LSR6 LED 4 35 LTG2 UNV DB W T15	CORONET	15,241.820	15,241.82	15,241.82
	<u>Prev Qty</u> <u>Change Qty</u> <u>New Qty</u> 0            4            4				
	** New Item **				

**From:**  
YALE WEST CHESTER C371  
MAIN OFFICE 610-719-9253  
200 GARFIELD AVENUE  
WEST CHESTER, PA 19380-4512  
Printed By: ETTA GRIFFIN  
Etta Griffin  
Lighting Projects

Authorizing Name: ETTA GRIFFIN      File Number: 307278  
Pinnacle cancelation; Coronet alt

These items are not ordered! To complete this order, sign below and provide a PO # for the order.

Signature: \_\_\_\_\_



Project: LCCC Watsontown Lab Reno

## Change Order - Quotation

Change Type	Quantity	Description	Unit or Lot#	Unit Price	Ext Price	Change Amt
✓ A-24' ALT	4	LSR6 LED 24 35 LTG2 UNV DB W T15	CORONET			
	<u>Prev Qty</u>	<u>Change Qty</u>	<u>New Qty</u>			
	0	4	4			
	** New Item **					
✓ B-12' ALT	8	LSR6 LED 12 35 LTG1 UNV DB W T15	CORONET			
	<u>Prev Qty</u>	<u>Change Qty</u>	<u>New Qty</u>			
	0	8	8			
	** New Item **					

<b>Total</b>	<b>3900.00</b>
--------------	----------------

**From:**  
 YALE WEST CHESTER C371  
 MAIN OFFICE 610-719-9253  
 200 GARFIELD AVENUE  
 WEST CHESTER, PA 19380-4512  
 Printed By: ETTA GRIFFIN  
 Etta Griffin  
 Lighting Projects

Authorizing Name: ETTA GRIFFIN  
 File Number: 307278  
 Pinnacle cancelation; Coronet alt

These items are not ordered! To complete this order, sign below and provide a PO # for the order.

Signature: \_\_\_\_\_





Aug 17, 2021

**RE: LUZERNE COUNTY COMMUNITY COLLEGE - LAB RENOVATION -  
GREATER SUSQUEHANNA CENTER  
WATSONTOWN PA**

<b>Type</b>	<b>MFG</b>	<b>Part</b>
	Coronet, Inc.	LSR6 LED 4 35 LTG2 UNV DB W T15
	Coronet, Inc.	LSR6 LED 24 35 LTG2 UNV DB W T15
	Coronet, Inc.	LSR6 LED 12 35 LTG1 UNV DB W T15

**Job Name:**  
 LUZERNE COUNTY COMMUNITY COLLEGE - LAB RENOVATION -  
 GREATER SUSQUEHANNA CENTER  
 Architect: HEMMLER & CAMAYD ARCHITECTS LTD (SCRANTON)  
 Distributor: YALE ELECTRIC SUPPLY-WEST CHESTER (West Chester)

**Catalog Number:**  
 LSR6 LED 4 35 LTG2 UNV DB W  
 T15  
 Notes:

**Type:**  
 NOR21-174532

# Coronet

## LSR6 LED

DATE

PROJECT

FIRM

TYPE



### FEATURES

- Available In Made To Measure Lengths Accurate Up To 1/16"
- Patterns Available (See Page 3)
- Damp Location Rated
- CRI 90+ Standard; R9>50
- 5 Year, 50,000 Hour Fixture Warranty
- 2700K, 3000K, 3500K, 4000K & 5000K Color Temperatures Available
- Available with PoE- [See More](#)

**APPLICATIONS** Offices, Lobbies, Retail Stores, Classrooms, Reception Areas, & Corridors

**FINISH** Standard Powder-Coated White. Custom RAL Colors Available

### CONSTRUCTION

Extruded Aluminum Housing with Steel End Caps.  
 Formed Steel Gear Tray

### OPTICS

Extruded High Transmission Satin Acrylic Lens with No LED Imaging



### DRIVERS, SENSORS, & POE

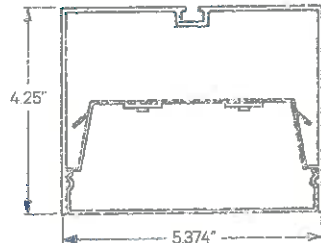
For Wiring Diagrams, POE, and Sensor Information Click [Here](#)



### ELECTRICAL

Integral Driver with 0-10V Dimming Standard. Several Driver Options Available

### EXTRUSION DIMENSIONS



### LED SYSTEM INFORMATION

	Nominal System Watts	Nominal Delivered Lumens	Nominal Efficacy
Standard (LTG1)	9 W/ft	825 lm/ft	91 LPW
Low (LTG2)	6.5 W/ft	602 lm/ft	92 LPW
High (LTG3)	13 W/ft	1,155 lm/ft	88 LPW

Based on a 90CRI, 3500K luminaire using one driver. Custom outputs available; specify below.

### ORDERING LSR6 LED

4

35

LTG2

UNV

DB

W

T15

#### 1 - FIXTURE ID

LSR6 LED

#### 2 - LENGTH

- 2 - 2 ft
- 4 - 4 ft
- 8 - 8 ft
- X"-X" - Specify Length
- PAT - Pattern (Consult Factory)

#### 3 - COLOR TEMP

- 27 - 2700K/90 CRI
- 30 - 3000K/90 CRI
- 35 - 3500K/90 CRI
- 40 - 4000K/90 CRI
- 50 - 5000K/90 CRI
- WD\* - Warm Dim 2200K-3000K
- TW\*\* - Tunable White 2700K-6500K

\*Requires WD10 Driver  
 \*\*Requires TW10 Driver

#### 4 - LED SYSTEM

- LTG1 - Standard
- LTG2 - Low
- LTG3 - High
- LTGC - Custom Output

#### 5 - VOLTAGE

- UNV - Universal (120/277V)
- 347V - 347V

\*Must use DB Driver

#### 6 - DRIVER

- DB - Standard 1% Dimming (0-10V)
- DB.1% - 0.1% Dimming (0-10V)
- ELV-TRI - 2-wire 1% Dimming (120V only) ELV and TRIAC Compatible
- LDE1 - Lutron Digital EcoSystem
- DALI - DALI-2 Driver
- PoE - Power over Ethernet. Consult Factory for Compatibility
- TW10 - Dual Channel, 0-10V For Color Tuning (CCT and Intensity Control)
- WD10 - 0-10V Driver For Warm Dimming
- PSQ - Lutron 0-10V For Color Tuning

#### 7 - FINISH

- W - White (Standard)
- CC - Custom Color (provide RAL#)

#### 8 - MOUNTING

- T - 9/16" Tee Grid
- TZ - 9/16" TechZone
- T15 - 15/16" Tee Grid
- SG - Slot Grid/Interlude
- F - Flange
- NT - Mud-in Flange
- PM-X\* - Perimeter Mount

\*X denotes mounting type on opposite side of wall (e-PM-NT) Consult Factory

#### 10 - SENSORS & CONTROLS (OPTIONAL)

- EIS - Enlighted Sensor
- WISD - Wattstopper Daylight Sensor
- WISM - Wattstopper Occupancy Sensor
- ECS - Eaton WaveLinx Sensor
- ACM - Acuity nLight Module Only
- ACS - Acuity nLight Sensor
- CCS - Casambi Module

NOTE: For other control systems not listed consult

#### 10 - CIRCUIT (Optional)

- EM 120V - Emergency Pack
- EM 277V - Emergency Pack
- EMCKT - Emergency Circuit

#### 11 - OTHER OPTIONS

- WH6 - 6ft Whips Preinstalled
- CP - Chicago Plenum

CORONET, Inc.  
 55 Shepherds Lane  
 Totowa, NJ 07512

T 973 345 7660  
 F 973 345 8705

CORONET, Inc. reserves the right to make any design changes for continuous improvement which will not affect the overall appearance or performance

WWW.CORONETLED.COM

1/3

Updated: 03/31/2021

**Job Name:**  
 LUZERNE COUNTY COMMUNITY COLLEGE - LAB RENOVATION -  
 GREATER SUSQUEHANNA CENTER  
 Architect: HEMMLER & CAMAYD ARCHITECTS LTD (SCRANTON)  
 Distributor: YALE ELECTRIC SUPPLY-WEST CHESTER (West Chester)

**Catalog Number:**  
 LSR6 LED 4 35 LTG2 UNV DB W  
 T15  
 Notes:

**Type:**  
 NOR21-174532

# Coronet

## LSR6 LED

DATE

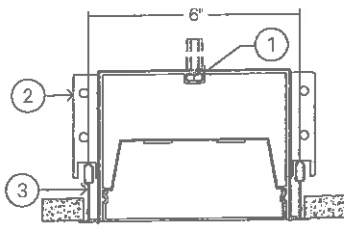
PROJECT

FIRM

TYPE

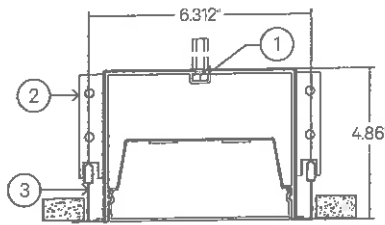
### MOUNTING OPTIONS

T - 9/16" Tee Grid



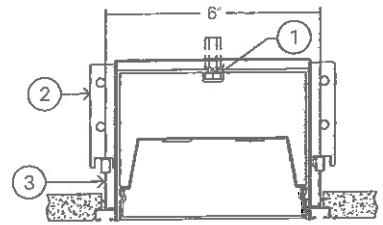
- 1 - 1/4-20 Slide Bolt (Coupler by EC)
- 2 - Tee Grid Bracket
- 3 - Tee Grid

T15 - 15/16" Tee Grid



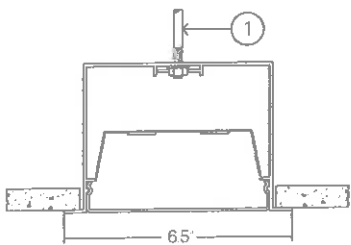
- 1 - 1/4-20 Slide Bolt (Coupler by EC)
- 2 - Tee Grid Bracket
- 3 - Tee Grid

SG - Slot Grid/Interlude



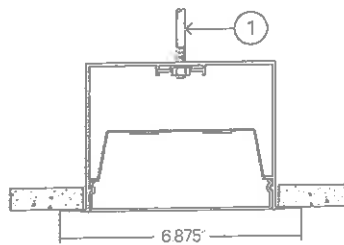
- 1 - 1/4-20 Slide Bolt (Coupler by EC)
- 2 - Slot Grid Bracket
- 3 - Slot Grid

F - Flange



- 1 - Threaded Rod (not supplied)

NT - No Trim/Spackle Flange



- 1 - Threaded Rod (not supplied)

Updated: 03/31/2021

**Job Name:**  
LUZERNE COUNTY COMMUNITY COLLEGE - LAB RENOVATION -  
GREATER SUSQUEHANNA CENTER  
Architect: HEMMLER & CAMAYD ARCHITECTS LTD (SCRANTON)  
Distributor: YALE ELECTRIC SUPPLY-WEST CHESTER (West Chester)

**Catalog Number:**  
LSR6 LED 4 35 LTG2 UNV DB W  
T15  
Notes:

**Type:**  
NOR21-174532



**LSR6 LED**

DATE	PROJECT	FIRM	TYPE
------	---------	------	------

**PATTERNS**

Patterns feature illuminated corners and angles. Must consult factory for custom corners and patterns.



Square Patterns



X Patterns



T Patterns



Custom Angles



Custom Patterns

**LENS CUT**



Mitered

Updated: 03/31/2021

**Job Name:**  
 LUZERNE COUNTY COMMUNITY COLLEGE - LAB RENOVATION -  
 GREATER SUSQUEHANNA CENTER  
 Architect: HEMMLER & CAMAYD ARCHITECTS LTD (SCRANTON)  
 Distributor: YALE ELECTRIC SUPPLY-WEST CHESTER (West Chester)

**Catalog Number:**  
 LSR6 LED 24 35 LTG2 UNV DB W  
 T15  
 Notes:

**Type:**  
 WCR21-174532

# Coronet

## LSR6 LED

DATE | PROJECT | FIRM | TYPE



### FEATURES

- Available In Made To Measure Lengths Accurate Up To 1/16"
- Patterns Available (See Page 3)
- Damp Location Rated
- CRI 90+ Standard; R9>50
- 5 Year, 50,000 Hour Fixture Warranty
- 2700K, 3000K, 3500K, 4000K & 5000K Color Temperatures Available
- Available with PoE- [See More](#)

**APPLICATIONS** Offices, Lobbies, Retail Stores, Classrooms, Reception Areas, & Corridors

**FINISH** Standard Powder-Coated White. Custom RAL Colors Available

**CONSTRUCTION** Extruded Aluminum Housing with Steel End Caps.  
 Formed Steel Gear Tray

**OPTICS** Extruded High Transmission Satin Acrylic Lens with No LED Imaging



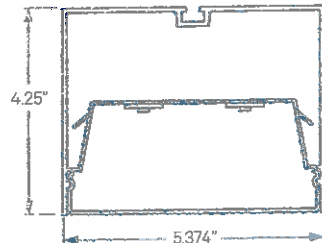
### DRIVERS, SENSORS, & POE

For Wiring Diagrams, POE, and Sensor Information Click [Here](#)



**ELECTRICAL** Integral Driver with 0-10V Dimming Standard. Several Driver Options Available

### EXTRUSION DIMENSIONS



### LED SYSTEM INFORMATION

	Nominal System Watts	Nominal Delivered Lumens	Nominal Efficacy
Standard (LTG1)	9 W/ft	825 lm/ft	91 LPW
Low (LTG2)	6.5 W/ft	602 lm/ft	92 LPW
High (LTG3)	13 W/ft	1,155 lm/ft	88 LPW

Based on a 90CRI, 3500K luminaire using one driver. Custom outputs available; specify below.

**ORDERING** LSR6 LED 24 35 LTG2 UNV DB W T15 9 10 11

### 1 - FIXTURE ID

LSR6 LED

### 2 - LENGTH

- 2 - 2 ft
- 4 - 4 ft
- 8 - 8 ft
- X'-X" - Specify Length
- PAT - Pattern

24FT

(Consult Factory)

### 3 - COLOR TEMP

- 27 - 2700K/90 CRI
- 30 - 3000K/90 CRI
- 35 - 3500K/90 CRI
- 40 - 4000K/90 CRI
- 50 - 5000K/90 CRI
- WD\* - Warm Dim
- 2200K-3000K
- TW\*\* - Tunable White
- 2700K-6500K

\*Requires WD10 Driver  
 \*\*Requires TW10 Driver

### 4 - LED SYSTEM

- LTG1 - Standard
- LTG2 - Low
- LTG3 - High
- LTGC - Custom Output

### 5 - VOLTAGE

- UNV - Universal (120/277V)
- 347V - 347V

\*Must use D5 Driver

### 6 - DRIVER

- DB - Standard 1% Dimming (0-10V)
- DB.1% - 0.1% Dimming (0-10V)
- ELV-TRI - 2-wire 1% Dimming (120V only)
- ELV and TRIAC Compatible
- LDE1 - Lutron Digital EcoSystem
- DALI - DALI-2 Driver
- PoE - Power over Ethernet Consult Factory for Compatibility
- TW10 - Dual Channel 0-10V For Color Tuning (CC1 and Intensity Control)
- WD10 - 0-10V Driver For Warm Dimming
- PSQ - Lutron 0-10V For Color Tuning

### 7 - FINISH

- W - White (Standard)
- CC - Custom Color (provide RAL#)

### 8 - MOUNTING

- T - 9/16" Tee Grid
- TZ - 9/16" TechZone
- T15 - 15/16" Tee Grid
- SG - Slot Grid/Interlude
- F - Flange
- NT - Mud-in Flange
- PM-X\* - Perimeter Mount

\*X denotes mounting type on opposite side of wall (ie-PM NT)  
 Consult Factory

### 10 - SENSORS & CONTROLS (OPTIONAL)

- EIS - Enlighted Sensor
- WISD - Wattstopper Daylight Sensor
- WISM - Wattstopper Occupancy Sensor
- ECS - Eaton WaveLinx Sensor
- ACM - Acuity nLight Module Only
- ACS - Acuity nLight Sensor
- CCS - Casambi Module

### 10 - CIRCUIT (Optional)

- EM 120V - Emergency Pack
- EM 277V - Emergency Pack
- EMCKT - Emergency Circuit

### 11 - OTHER OPTIONS

- WH6 - 6ft Whips
- Preinstalled
- CP - Chicago Plenum

NOTE: For other control systems not listed consult

Updated: 03/31/2021

CORONET, Inc.  
 55 Shepherds Lane  
 Totowa, NJ 07512

T 973 345 7660  
 F 973 345 8705

CORONET, Inc. reserves the right to make any design changes for continuous improvement which will not affect the overall appearance or performance.

WWW.CORONETLED.COM

1/3

**Job Name:**  
 LUZERNE COUNTY COMMUNITY COLLEGE - LAB RENOVATION -  
 GREATER SUSQUEHANNA CENTER  
 Architect: HEMMLER & CAMAYO ARCHITECTS LTD (SCRANTON)  
 Distributor: YALE ELECTRIC SUPPLY-WEST CHESTER (West Chester)

**Catalog Number:**  
 LSR6 LED 24 35 LTG2 UNV DB W  
 T15  
 Notes:

**Type:**  
 NOR21-174532

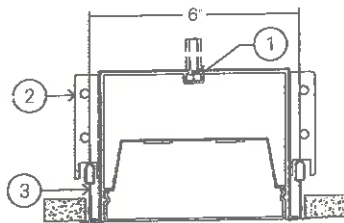
# Coronet

## LSR6 LED

DATE	PROJECT	FIRM	TYPE
------	---------	------	------

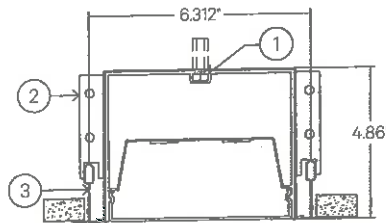
### MOUNTING OPTIONS

T - 9/16" Tee Grid



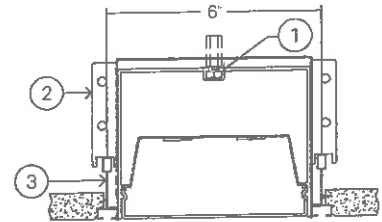
- 1 - 1/4-20 Slide Bolt (Coupler by EC)
- 2 - Tee Grid Bracket
- 3 - Tee Grid

T15 - 15/16" Tee Grid



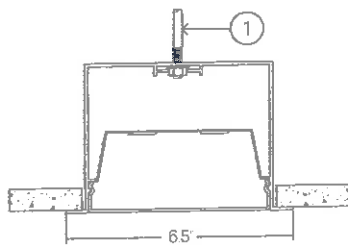
- 1 - 1/4-20 Slide Bolt (Coupler by EC)
- 2 - Tee Grid Bracket
- 3 - Tee Grid

se - Slot Grid/Interlude



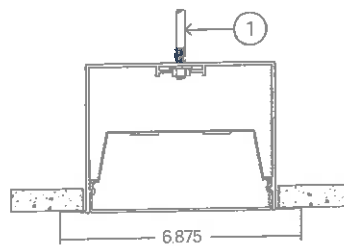
- 1 - 1/4-20 Slide Bolt (Coupler by EC)
- 2 - Slot Grid Bracket
- 3 - Slot Grid

F - Flange



- 1 - Threaded Rod (not supplied)

NT - No Trim/Spackle Flange



- 1 - Threaded Rod (not supplied)

Updated: 03/31/2021

**Job Name:**  
LUZERNE COUNTY COMMUNITY COLLEGE - LAB RENOVATION -  
GREATER SUSQUEHANNA CENTER  
Architect: HEMMLER & CAMAYD ARCHITECTS LTD (SCRANTON)  
Distributor: YALE ELECTRIC SUPPLY-WEST CHESTER (West Chester)

**Catalog Number:**  
LSR6 LED 24 35 LTG2 UNV DB W  
T15  
Notes:

**Type:**  
NOR21-174532

# Coronet

## LSR6 LED

DATE	PROJECT	FIRM	TYPE
------	---------	------	------

### PATTERNS

Patterns feature illuminated corners and angles. Must consult factory for custom corners and patterns.



Square Patterns



X Patterns



T Patterns



Custom Angles



Custom Patterns

### LENS CUT



Mitered

Updated: 03/31/2021

**Job Name:**  
 LUZERNE COUNTY COMMUNITY COLLEGE - LAB RENOVATION -  
 GREATER SUSQUEHANNA CENTER  
 Architect: HEMMLER & CAMAYD ARCHITECTS LTD (SCRANTON)  
 Distributor: YALE ELECTRIC SUPPLY-WEST CHESTER (West Chester)

**Catalog Number:**  
 LSR6 LED 12 35 LTG1 UNV DB W  
 T15  
**Notes:**

**Type:**

NOR21-174532

# Coronet

## LSR6 LED

DATE | PROJECT | FIRM | TYPE



**FEATURES**

- Available In Made To Measure Lengths Accurate Up To 1/16"
- Patterns Available (See Page 3)
- Damp Location Rated
- CRI 90+ Standard; R9>50
- 5 Year, 50,000 Hour Fixture Warranty
- 2700K, 3000K, 3500K, 4000K & 5000K Color Temperatures Available
- Available with PoE- [See More](#)

**APPLICATIONS** Offices, Lobbies, Retail Stores, Classrooms, Reception Areas, & Corridors

**FINISH** Standard Powder-Coated White. Custom RAL Colors Available

**CONSTRUCTION** Extruded Aluminum Housing with Steel End Caps. Formed Steel Gear Tray

**OPTICS** Extruded High Transmission Satin Acrylic Lens with No LED Imaging



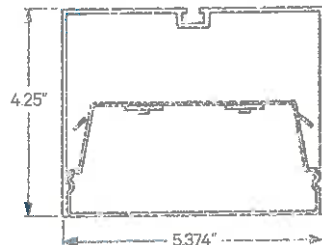
**DRIVERS, SENSORS, & POE**



For Wiring Diagrams, POE, and Sensor Information Click [Here](#)

**ELECTRICAL** Integral Driver with 0-10V Dimming Standard. Several Driver Options Available

**EXTRUSION DIMENSIONS**



**LED SYSTEM INFORMATION**

	Nominal System Watts	Nominal Delivered Lumens	Nominal Efficacy
Standard (LTG1)	9 W/ft	825 lm/ft	91 LPW
Low (LTG2)	6.5 W/ft	602 lm/ft	92 LPW
High (LTG3)	13 W/ft	1,155 lm/ft	88 LPW

Based on a 90CRI, 3500K luminaire using one driver. Custom outputs available; specify below.

**ORDERING** LSR6 LED 12 35 LTG1 UNV DB W T15

**1 - FIXTURE ID**

LSR6 LED

**2 - LENGTH**

- 2 - 2 ft
- 4 - 4 ft
- 8 - 8 ft
- X'-X" - Specify Length
- PAT - Pattern

12FT

(Consult Factory)

**3 - COLOR TEMP**

- 27 - 2700K/90 CRI
- 30 - 3000K/90 CRI
- 35 - 3500K/90 CRI
- 40 - 4000K/90 CRI
- 50 - 5000K/90 CRI
- WD\* - Warm Dim 2200K-3000K
- TW\*\* - Tunable White 2700K-6500K

\*Requires WD10 Driver  
 \*\*Requires TW10 Driver

**4 - LED SYSTEM**

- LTG1 - Standard
- LTG2 - Low
- LTG3 - High
- LTGC - Custom Output

**5 - VOLTAGE**

- UNV - Universal (120/277V)
- 347V - 347V

\*Must use DB Driver

**6 - DRIVER**

- DB - Standard 1% Dimming (0-10V)
- DB.1% - 0.1% Dimming (0-10V)
- ELV-TRI - 2-wire 1% Dimming (120V only) ELV and TRIAC Compatible
- LDE1 - Lutron Digital EcoSystem
- DALI - DALI-2 Driver
- PoE - Power over Ethernet. Consult Factory for Compatibility
- TW10 - Dual Channel, 0-10V For Color Tuning (CCT and Intensity Control)
- WD10 - 0-10V Driver For Warm Dimming
- PSQ - Lutron 0-10V For Color Tuning

**7 - FINISH**

- W - White (Standard)
- CC - Custom Color (provide RAL#)

**8 - MOUNTING**

- T - 9/16" Tee Grid
  - TZ - 9/16" TechZone
  - TIS - 15/16" Tee Grid
  - SG - Slot Grid/Interlude
  - F - Flange
  - NT - Mud-in Flange
  - PM-X\* - Perimeter Mount
- \*X denotes mounting type on opposite side of wall (ie: PM-NT)  
 Consult Factory

**10 - SENSORS & CONTROLS (OPTIONAL)**

- EIS - Enlighted Sensor
- WISD - Wattstopper Daylight Sensor
- WISM - Wattstopper Occupancy Sensor
- ECS - Eaton WaveLinx Sensor
- ACM - Acuity nLight Module Only
- ACS - Acuity nLight Sensor
- CCS - Casambi Module

**10 - CIRCUIT (Optional)**

- EM 120V - Emergency Pack
- EM 277V - Emergency Pack
- EMCKT - Emergency Circuit

**11 - OTHER OPTIONS**

- WH6 - 6ft Whips Preinstalled
- CP - Chicago Plenum

NOTE: For other control systems not listed consult

Updated: 03/31/2021

CORONET, Inc.  
 55 Shepherds Lane  
 Totowa, NJ 07512

T 973 345 7660  
 F 973 345 8705

CORONET, Inc. reserves the right to make any design changes for continuous improvement which will not affect the overall appearance or performance.

WWW.CORONETLED.COM

1/3



**Job Name:**  
 LUZERNE COUNTY COMMUNITY COLLEGE - LAB RENOVATION -  
 GREATER SUSQUEHANNA CENTER  
 Architect: HEMMLER & CAMAYD ARCHITECTS LTD (SCRANTON)  
 Distributor: YALE ELECTRIC SUPPLY-WEST CHESTER (West Chester)

**Catalog Number:**  
 LSR6 LED 12 35 LTG1 UNV DB W  
 T15  
 Notes:

**Type:**  
 NOR21-174532

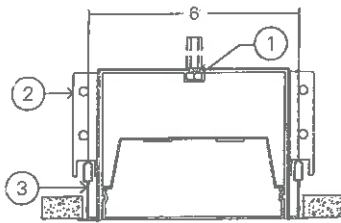
# Coronet

## LSR6 LED

DATE | PROJECT | FIRM | TYPE

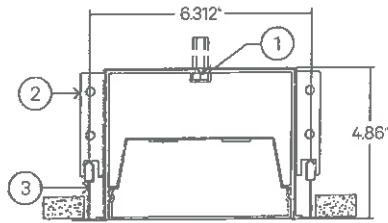
**MOUNTING OPTIONS**

T - 9/16" Tee Grid



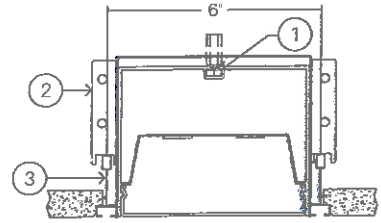
- 1 - 1/4-20 Slide Bolt (Coupler by EC)
- 2 - Tee Grid Bracket
- 3 - Tee Grid

T15 - 15/16" Tee Grid



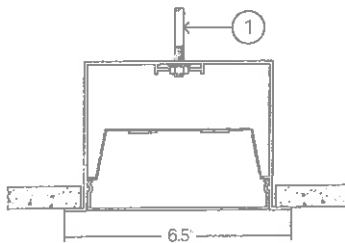
- 1 - 1/4-20 Slide Bolt (Coupler by EC)
- 2 - Tee Grid Bracket
- 3 - Tee Grid

SG - Slot Grid/Interlude



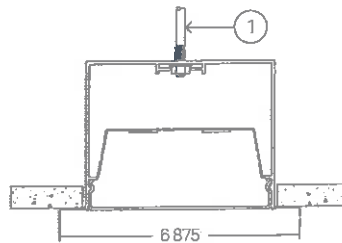
- 1 - 1/4-20 Slide Bolt (Coupler by EC)
- 2 - Slot Grid Bracket
- 3 - Slot Grid

F - Flange



- 1 - Threaded Rod (not supplied)

NT - No Trim/Spackle Flange



- 1 - Threaded Rod (not supplied)

Updated: 03/31/2021

**Job Name:**  
LUZERNE COUNTY COMMUNITY COLLEGE - LAB RENOVATION -  
GREATER SUSQUEHANNA CENTER  
Architect: HEMMLER & CAMAYD ARCHITECTS LTD (SCRANTON)  
Distributor: YALE ELECTRIC SUPPLY-WEST CHESTER (West Chester)

**Catalog Number:**  
LSR6 LED 12 35 LTG1 UNV DB W  
T15  
Notes:

**Type:**  
NOR21-174532

# Coronet

## LSR6 LED

DATE

PROJECT

FIRM

TYPE

### PATTERNS

Patterns feature illuminated corners and angles. Must consult factory for custom corners and patterns.



Square Patterns



X Patterns



T Patterns



Custom Angles



Custom Patterns

### LENS CUT



Mitered

Updated: 03/31/2021

CORONET, Inc.  
55 Shepherds Lane  
Totowa, NJ 07512

T 973 345 7660  
F 973 345 8705

CORONET, Inc. reserves the right to make any design changes for continuous improvement which will not affect the overall appearance or performance.

[WWW.CORONETLED.COM](http://WWW.CORONETLED.COM)

3/3