



YOUR NEXT

Journey

STARTS HERE.



Adventures
AWAIT



C·I·E TOURS

IRELAND | ENGLAND | SCOTLAND | ICELAND | ITALY | SPAIN

YOUR NEXT

Journey

STARTS HERE.

Irish Adventure

8 Days | 13 Meals | 4 Star Vacation



I R E L A N D | E N G L A N D | S C O T L A N D | I C E L A N D | I T A L Y | S P A I N

DISCOVER THE CIE TOURS DIFFERENCE



CIE Tour's finest



C·I·E TOURS

- **Premier niche tour operator** to Ireland, Britain, Iceland, Italy and now Spain
- Offering the **largest choice** and breadth of product
- **Award winning** itineraries since 1932
- **Authentically Irish**, known for the “best guides in the industry”
- **Guest Satisfaction Rating of 95%** based on post trip surveys
- **Office locations:** Morristown, NJ · Dublin, Ireland and London, England

DISCOVER THE CIE TOURS DIFFERENCE



Glendalough Monastic Site

All -

- Ev
im
an
- No
ex
to
- Ou
sp



els,
ent,

her

the

ADVANTAGE



Guinness Storehouse



Waterford



Glendalough Monastic Site

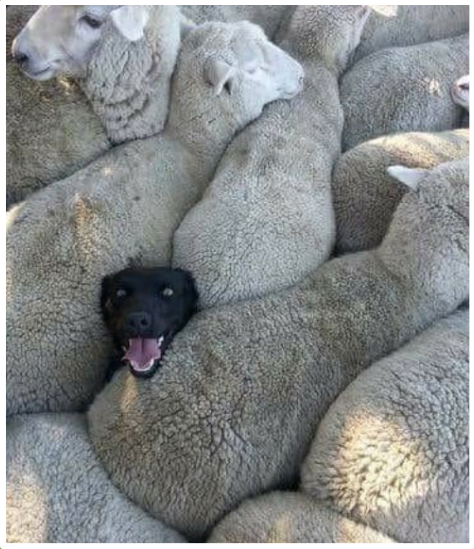


Dublin



The Cliffs of Moher are approximately 9 miles long, and they rise to above 700 feet at their highest point along the Atlantic coastline.

Cliffs of Moher



The first recorded sheepdog trials took place in 1873 in North Wales. Since the International Sheepdog Society formed in 1906, national trials are held every summer in Ireland and Britain.

Sheepdog Trials



Blarney Castle was built in 1446. Legend has it that the Blarney Stone bestows upon the kisser the gift of eloquence or 'blarney'.

Blarney Castle

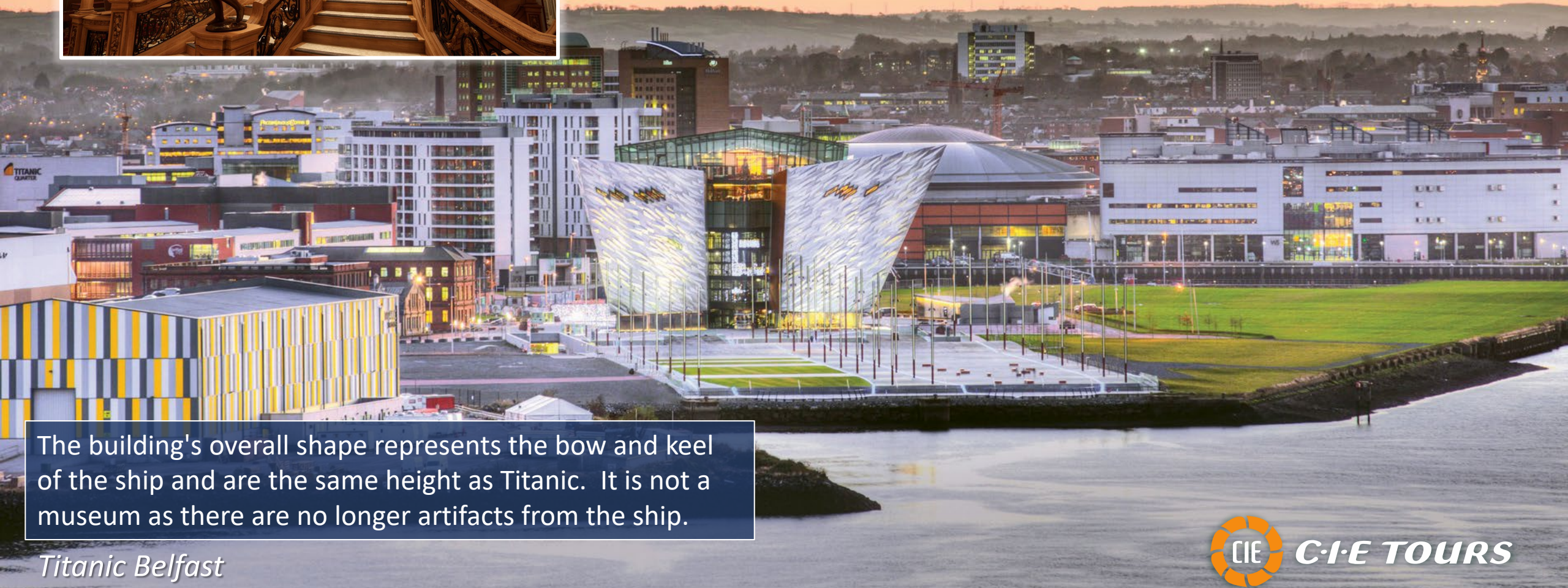
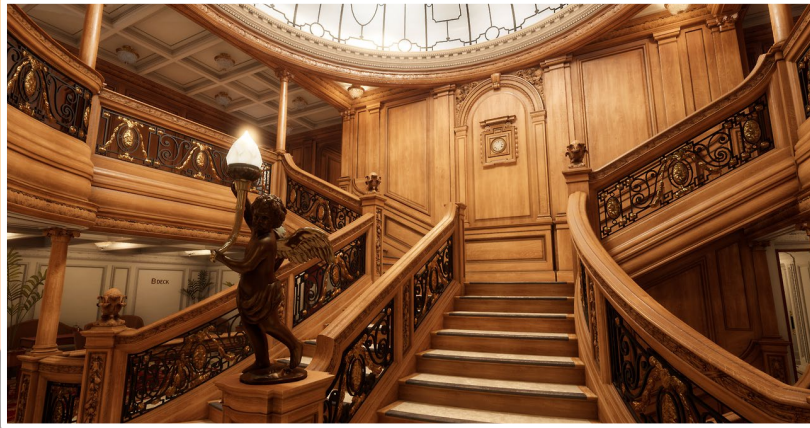




Formed roughly 60M years ago, some of the 40,000 columns go as high as 39 feet into the air. One of two UNESCO Heritage Sites in Ireland (Brú na Bóinne).

Giant's Causeway





The building's overall shape represents the bow and keel of the ship and are the same height as Titanic. It is not a museum as there are no longer artifacts from the ship.

Titanic Belfast



EXPERIENCING IRELAND



Galway

The Emerald Isle

IRELAND'S ANCIENT EAST

Discover 5000 years of history and culture spread over 15 counties.

DUBLIN

As intimate as a village and as friendly as an Irish pub. Framed by mountains, centered along the River Liffey and filled with over 1,000 years of history

WILD ATLANTIC WAY

Explore soaring cliffs and rugged landscapes on a journey along Ireland's Western coast.

NORTHERN IRELAND

Embrace a Giant Spirit and enjoy the scenic countryside and bustling cities.



IRISH ADVENTURE



Tour Highlights

- House of Waterford Crystal
- Blarney Castle and Gardens
- Glendalough Monastic Site
- Cliffs of Moher



Guinness Storehouse



IRISH ADVENTURE



Tour Highlights

- Giant's Causeway
- Titanic Belfast
- Ring of Kerry
- Glyde Inn Irish Night



Guinness Storehouse



IRISH ADVENTURE



Hotel Accommodations

- Clayton Hotel Cardiff Lane
- Dooley's Hotel
- Ballygarry Estate Hotel & Spa (2)
- Galway Bay Hotel
- Everglades Hotel
- Croke Park Hotel



IRISH ADVENTURE



Day One

- Dublin arrival
- Afternoon city tour of Dublin with a local guide
- Visit Teeling Distillery
- Enjoy a welcome drink and dinner at your hotel

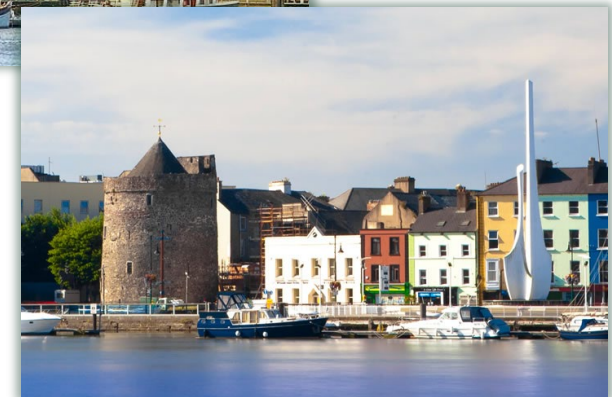


IRISH ADVENTURE



Day Two

- Travel to Glendalough
- Continue to New Ross and visit the Dunbrody Emigration Ship
- Travel to Waterford and enjoy a walking tour
- Dinner at your hotel



IRISH ADVENTURE



Day Three

- Visit the House of Waterford Crystal
- Travel to Cobh
- Continue to Blarney Castle
- Travel to Killarney
- Dinner at your hotel

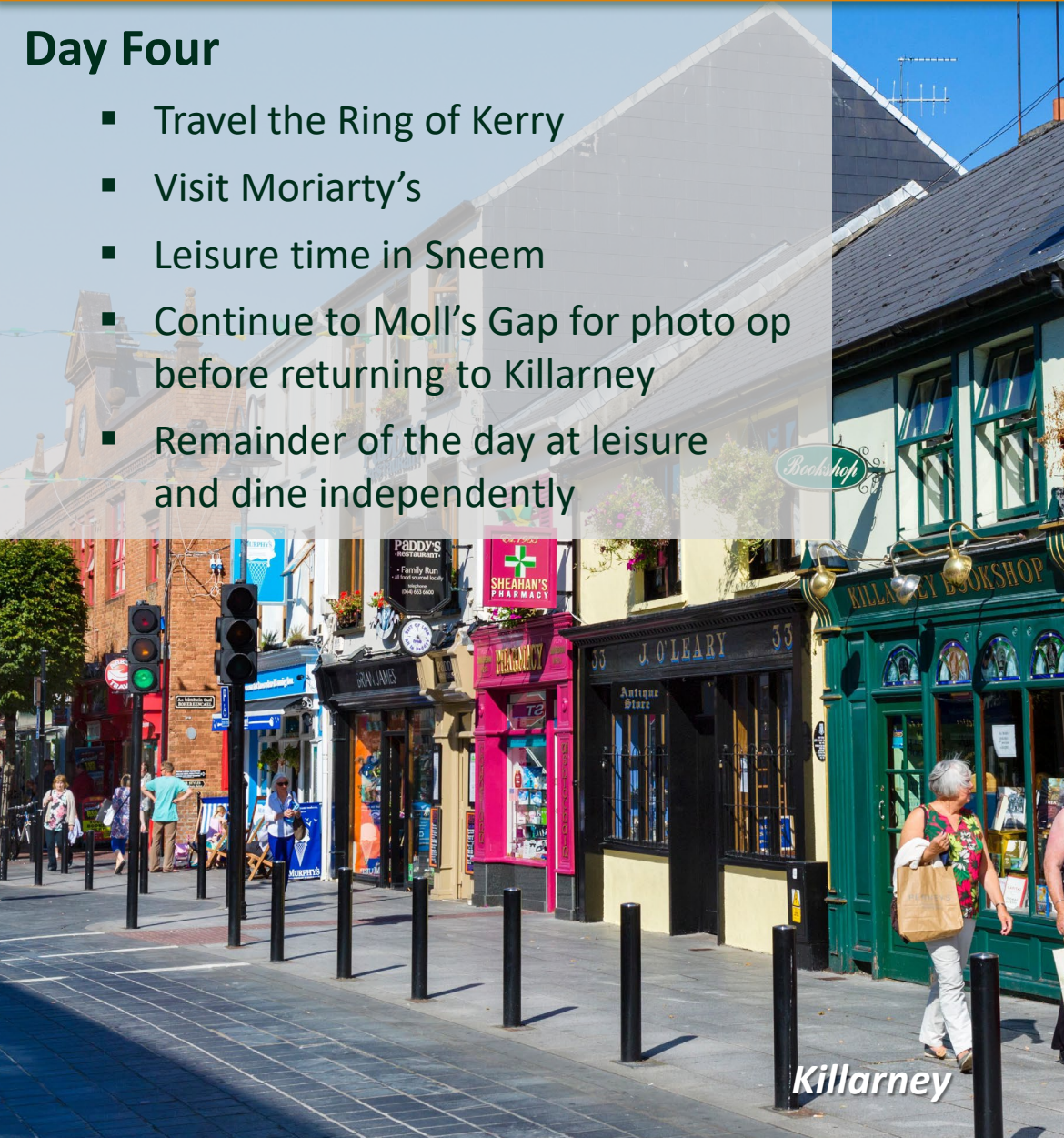


IRISH ADVENTURE



Day Four

- Travel the Ring of Kerry
- Visit Moriarty's
- Leisure time in Sneem
- Continue to Moll's Gap for photo op before returning to Killarney
- Remainder of the day at leisure and dine independently

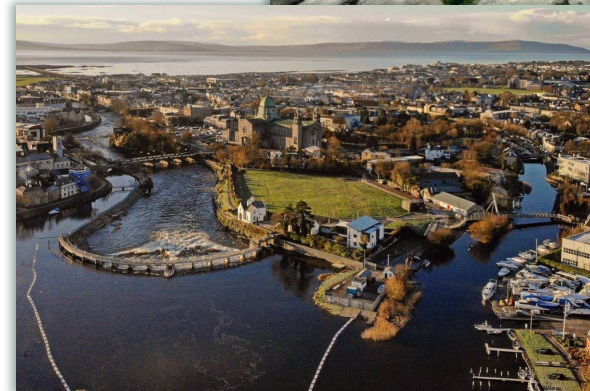


IRISH ADVENTURE



Day Five

- Travel the County Clare coastline
- Visit the Cliffs of Moher
- Drive through the Burren
- Continue to Galway and enjoy a panoramic tour
- Dinner at your hotel

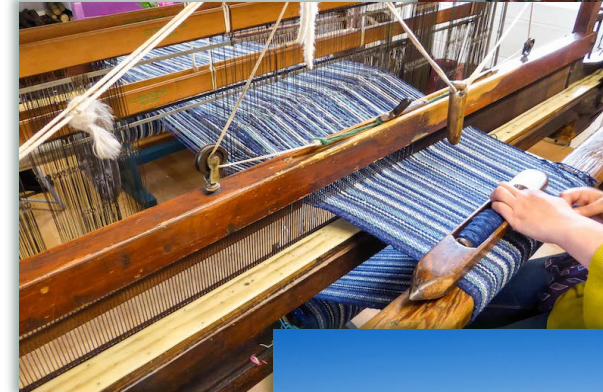


IRISH ADVENTURE



Day Six

- Visit a traditional farm along with a sheepdog demonstration
- Travel to Donegal town
- Visit Triona Design
- Continue to Derry and enjoy a walking tour
- Dinner at your hotel



IRISH ADVENTURE



Day Seven

- Travel to Giant's Causeway
- Continue to Belfast
- Visit Titanic Belfast
- Glyde Inn Irish evening



IRISH ADVENTURE



Day Eight

- Breakfast and then transfer to...
- Dublin Airport
- Pre – US Customs check
- Home Departure



IRISH ADVENTURE



Payment Guidelines

- \$3355 pp based on double occupancy
- \$4085 single on request
- Per person deposit of \$250
- Deposit becomes non – refundable 100 days prior to departure date
- Final payment due 65 days prior to departure date
- Book by May 20 and receive a 5% discount on the land rate. Deposit is non refundable.

Killarney





YOUR NEXT

Journey

STARTS HERE.

Adventures
AWAIT



C·I·E TOURS

IRELAND | ENGLAND | SCOTLAND | ICELAND | ITALY | SPAIN